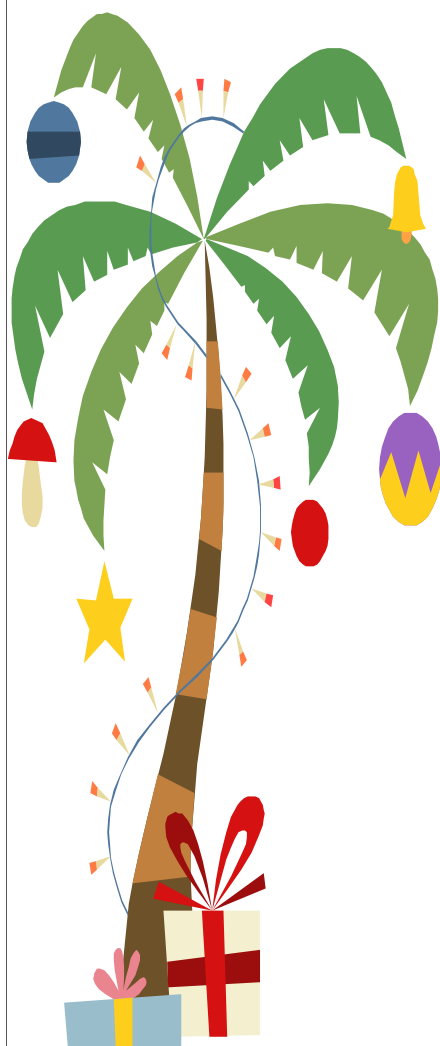


DECEMBER 2016

## UPCOMING EVENTS



### Important Dates

Dec. 1st– Webby

Dec. 2nd– Bounce House

Dec. 8th– Webby

Dec. 9th– Last day to turn in auction  
items for baskets

Dec. 10th–Parent Volunteer Day

Dec. 14th– Last Day Toy Drive

Dec. 15th-Christmas Program  
@ 6:30pm

Christmas Auction

Dec. 16th– Christmas Parties  
Bounce House

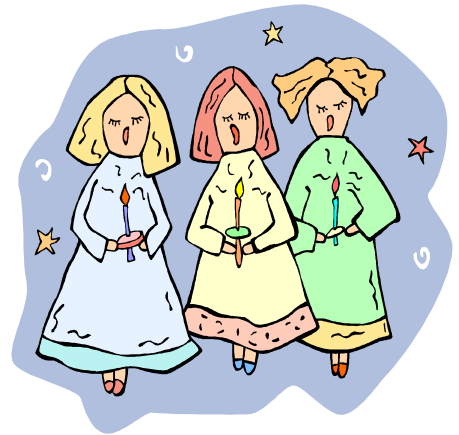
Dec. 19th-Jan. 2nd– Christmas Break  
No Public School and No VPK

Dec. 23rd– Circle C Closes @ 2pm

Dec. 30th– Bounce House

## Christmas Program

Please join us on **December 15th @ 6:30pm** for our annual Christmas Program (please have your child dressed and here no later than 6:00pm). Feel free to arrive a few minutes early *and* stay after the program to browse through our Auction Fundraiser. We will have plenty of baskets you can bid on, lots of raffle items, and personalized ornaments that the children made \$5 each! This fundraiser is sponsored by the community and our very own families. We are raising money for our school and hopefully a new playground for the threes and fours field!! We hope to see all of you there as we laugh and sing along for our children and get in the Holiday Spirit!



## SILENT AUCTION

WE ARE IN NEED OF YOUR HELP FOR OUR ANNUAL SILENT AUCTION!

HERE ARE SOME WAYS TO HELP:

- DONATE NEW ITEMS FOR AUCTION BASKETS (EX. COOKBOOKS, WINE ACCESSORIES, CANDLES, LOTIONS, ORNAMENTS, COOKING ITEMS, BOOKS, ETC.). YOU CAN DONATE TOWARDS YOUR CHILD'S CLASSROOM THEME OR THINK OUTSIDE THE BOX! PLEASE DROP AUCTION ITEMS OFF IN THE OFFICE NO LATER THAN DECEMBER 9TH SO WE HAVE TIME TO CREATE THE BASKETS!
- VOLUNTEER TO HELP MAKE BASKETS, SET UP FOR THE EVENT THAT WEEK, OR WORK THE AUCTION/RAFFLE (SIGN UP SHEET LOCATED AT THE FRONT ENTRY).
- OUR PARENT VOLUNTEER DAY WILL BE SATURDAY DECEMBER 10TH. WE WILL BE HANGING LIGHTS, DECORATING THE STAGE, PUTTING TOGETHER BASKETS AND RAFFLE ITEMS. EVEN IF YOU CAN ONLY COME FOR 15 MINUTES EVERY LITTLE BIT HELPS!

THANK YOU FOR YOUR TIME AND SUPPORT!

### Metropolitan Ministries Toy Drive

**November 28th through December 14th** we will be having our annual toy drive! Please help our community by donating new toys to children who are less fortunate. As you know it is pure bliss to see children happy on Christmas morning with their new toys from Santa!

### Supply Fee

**REMINDER** supply fee of \$25 is due on **January 1st.**

### Tuition

**Please remember during the holidays to let us know if you would like to use a vacation week towards tuition. You have 2 vacation weeks per year to use when you choose. Vacation weeks do not roll over. No refunds.**